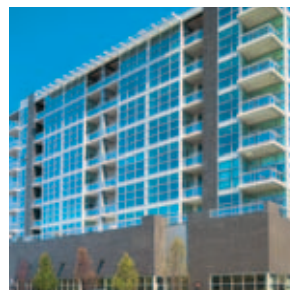
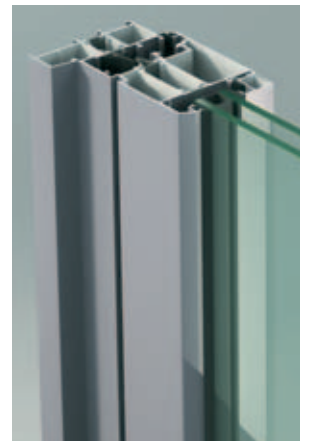
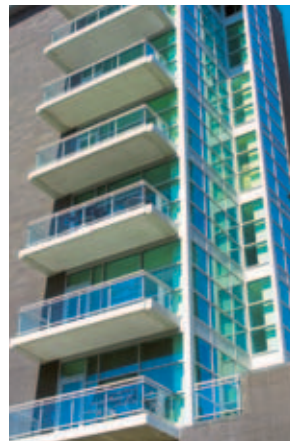


# NC 82 STH

## Entrances & Windows



# NC 82 STH

## Features

- 6063-T5 Aluminum Alloy Frame
- Frame Depth 82 mm [3 1/4"]
- Max Glass Size 38 mm [1 1/2"]
- Weather Stripping: EPDM Gaskets
- Thermal Barrier: Polyamide
- Heavy Duty Hinges
- Multi-Point Lock System
- Durable Components

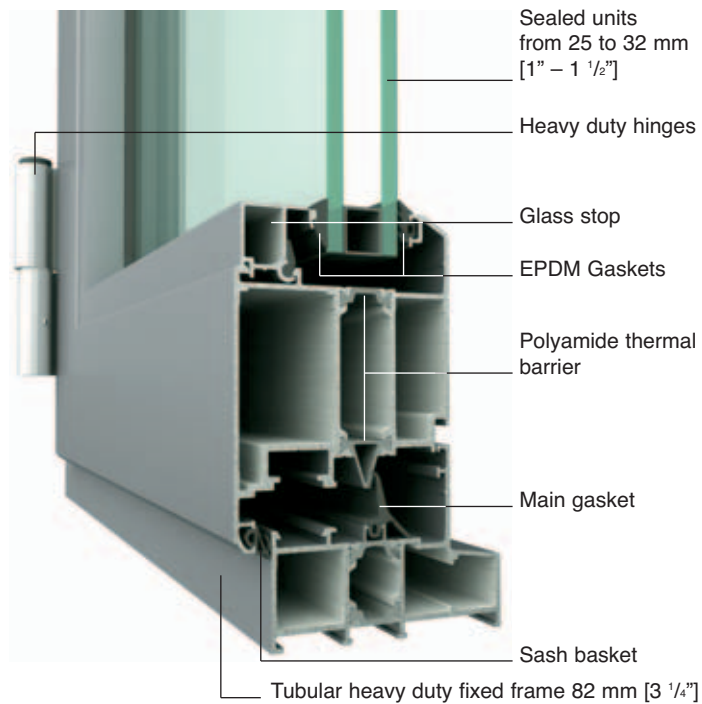
## Benefits

- Acoustic Insulation
- Thermal Insulation
- Quiet and Smooth Closing System
- Easy Maintenance

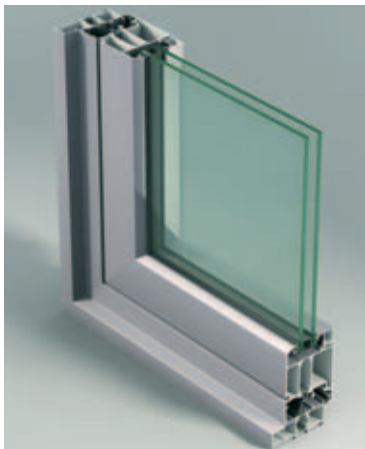
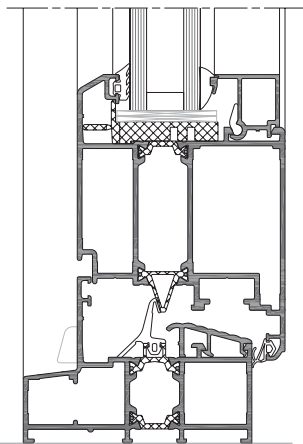
## Applications

- Doors
- Fixed Windows
- Operable Windows

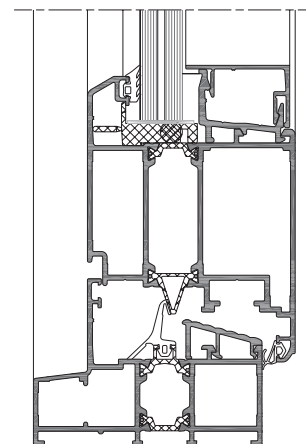
## Technology



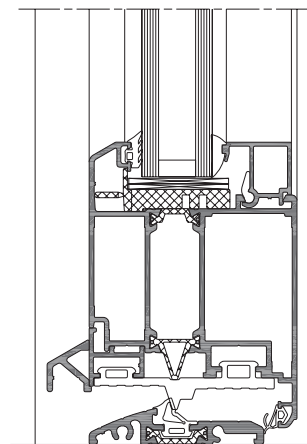
## Standard solution







## Hurricane-proof solution



## ADA solution

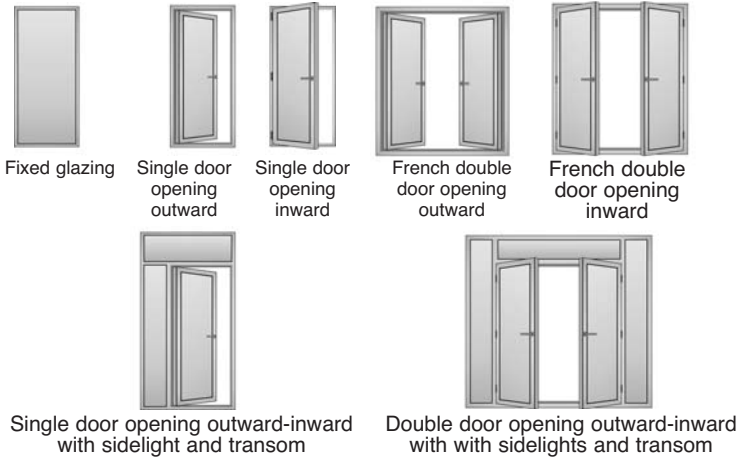


## Performance data

Tested Configuration	Specimen Size	Threshold	AAMA/WDMA/CSA 101/I.S.2/A440-05		TAS	
			AAMA	CSA		
 Side lite	1220 x 2440 mm [48" x 96"]	-	<b>C 90</b>		<b>DP100</b> Structural load: DP100 Cycling test: DP100 -	
			Design pressure: 6436 Pa [135 psf]			
			Water penetration: 720 Pa [15 psf]			
 Transom	2440 x 762 mm [96" x 30"]	-	<b>C 90</b>		-	
			Design pressure: 6436 Pa [135 psf]			
			Water penetration: 720 Pa [15 psf]			
 Single Door Opening Inward	1220 x 2440 mm [48" x 96"]	Standard threshold	<b>ATD-AW75</b>		-	
			Design pressure: 5386 Pa [112 psf]			
			Water penetration: 720 Pa [15 psf]			
		ADA threshold	<b>ATD-AW 55 / SHD-AW 55</b>			-
			Design pressure: 3926 Pa [82 psf]			
			Water penetration: 720 Pa [15 psf]			
 Double Door Opening Inward	2440 x 2440 mm [96" x 96"]	Standard threshold	<b>ATD-AW70</b>		<b>DP100 *</b> Structural load: DP100 Cycling test: DP70 -	
			Design pressure: 5027 Pa [105 psf]			
			Water penetration: 720 Pa [15 psf]			
		ADA threshold	<b>SHD-C35</b>			-
			Design pressure: 1675 Pa [35 psf]			
			Water penetration: 720 Pa [15 psf]			

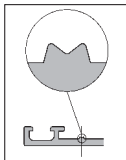
\*: TAS large missile impact test performed on Opening Outward Double Door

## Configurations



## Quality

METRA stands for quality and optimal performance. Only original METRA profiles and accessories can certify the highest performance. Original METRA products have an "M" mark on the interior surface.



METRA quality is certified by ISO 9001. METRA controls the entire process of production for the extrusions. Manufacturing and installation of final products are performed through a network of independent specialists.





**METRA**  
SYSTEMS

METRA Systems  
1995 Industrial Blvd. - Laval, QC H7S 1P6, Canada  
Tel. +1 450 629 1806 - Fax +1 450 629 7313  
info@metrasystem.com  
www.metrasystem.com



**METRA**

METRA S.p.A.  
Via Stacca, 1 - 25050 Rodengo Saiano (BS) Italy  
Tel. +39 030 6819.1 - Fax +39 030 6819 990  
metra@metra.it  
www.metra.eu

**METRA** prints on ecologically friendly paper  
and uses printing products with low  
environmental impact.



## METRA Products

Architectural Envelope

Entrances & Windows

Special Systems

Sliding Systems

Accessories

01/2009